

## Riparian Assessment Workshop

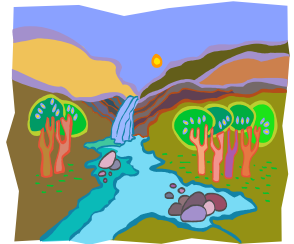
Sponsored by the New Mexico Riparian Council

September 19-23, 2005

Rancho Del Chaparral Girl Scout Camp, Jemez Mountains

The New Mexico Riparian Council and the New Mexico Proper Functioning Condition (PFC) Training Team is offering a four-day workshop in September 2005. The intent of this workshop is to offer an introduction to several methods for assessing riparian and watershed conditions. Presentations will be made in a classroom setting and in the field, with time for discussion and questions.

- ❖ What: A workshop on tools/methods and when to use them. Also, requirements of each method, such as equipment, time, training needs, data management, and analysis. Methods will include:
  - Proper Functioning Condition (PFC) - NM PFC Cadre
  - Riparian vegetation monitoring (Green Line) - Alma Winward, and
  - Thalweg-Watershed Area Link (T-Walk) - Corky Ohlander.
  - Tuesday, September 20 – a special evening program featuring Bill Zeedyk's 'Induced Meandering' presentation



- ❖ When: **September 19-23, 2005.** Workshop starts at 1:00PM on Monday and finishes at 12pm on Friday.
- ❖ Where: Rancho Del Chaparral Girl Scout Camp in the Jemez Mountains. Field discussions will be conducted on the Rio de Las Vacas. Yes, we'll be camping so bring your sleeping bag!
- ❖ Cost: Just \$200.00 for members who register by August 1, 2005. This fee will cover food and lodging for the week. See below for list of fees and deadlines. Space is limited!

To Register:

- Mail the following form with payment to: NMRC, PO Box 584, Albuquerque, N.M. 87103.
- For more information, call Doug Shaw at (505)345-0364.

---

Riparian Functional Assessment Workshop Registration: September 19-23, 2005

Name: \_\_\_\_\_

Address: \_\_\_\_\_

E-mail: \_\_\_\_\_

Phone # \_\_\_\_\_

Special health or dietary needs? \_\_\_\_\_

Please check one:

Early Registration (by August 1)

\_\_\_ Member - \$200

\_\_\_ Non-member - \$250 (includes 1 year membership)

Late Registration (by September 1)

\_\_\_ Member - \$225

\_\_\_ Non-member - \$275 (includes 1 year membership)



# Directions to Camp

Turn east on Highway 126. The road splits one-half mile out of town; go to the right. About 9.3 miles further, the pavement ends and you continue on a dirt road. Continue on 126, always staying with the main road and keeping to the right at any fork in the road. Just past the 17-mile marker, turn to the right on Forest Road 20. Approximately 3 miles further, a sign will direct you to the right over a bridge. After you cross the bridge, turn left and go up the hill to the gate.

If the gate is closed when you arrive, close it after you enter. It is one more mile to Camp Headquarters. Park your car in the parking lot. You will be escorted to your camp site.

